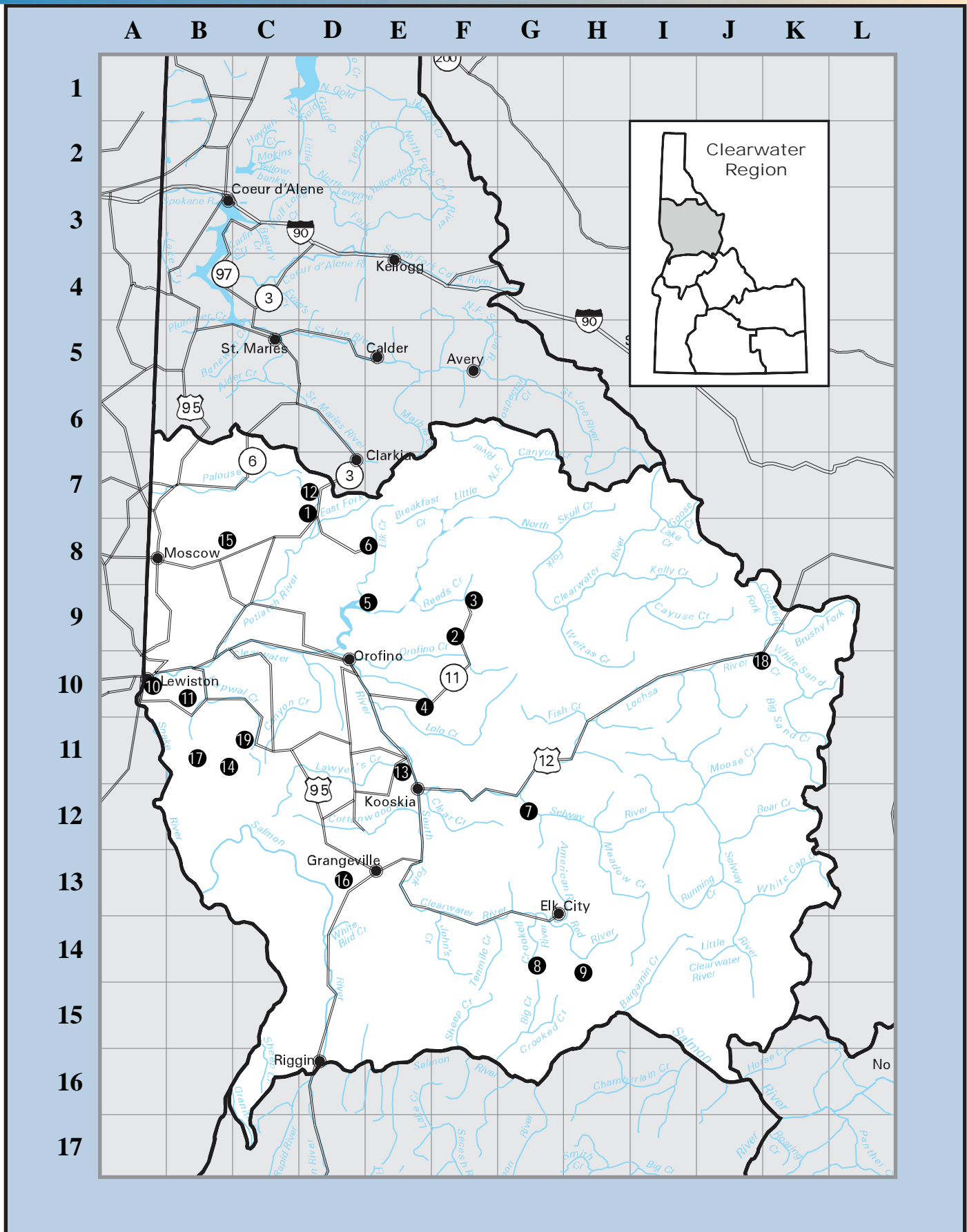


# Clearwater Region Fisheries



# Clearwater Region Fisheries

Lakes and Reservoirs (Size in acres)	Map Location	Cold Water Fish											Warm Water Fish						Facilities									
		Rainbow Trout	Cutthroat Trout	Brown Trout	Brook Trout	Lake Trout	Bull Trout	Chinook Salmon	Kokanee Salmon	Tiger Muskie	Steelhead	White Sturgeon	Mtn. Whitefish	Smallmouth Bass	Largemouth Bass	Crappie	Bluegill	Yellow Perch	Channel Catfish	Bullhead Catfish	Pumpkinseed	Motor Restriction	Boat Ramps	Docks	Toilets	Camping	ADA Access	
1. Blue Lagoon (5)	D7	◆																			◆					◆		
2. Campbells Pond (5)*	F9	◆												◆					◆	◆		◆	◆	◆	◆	◆	◆	
3. Deer Creek Reservoir (75)*	F9	◆	◆																			◆	◆	◆	◆	◆	◆	
4. Deyo Reservoir (56)	F10	◆												◆		◆												
5. Dworshak Reservoir (16,000)	D9	◆	◆				◆		◆				◆		◆								◆	◆	◆	◆	◆	
6. Elk Creek Reservoir (46)	E8	◆			◆								◆	◆	◆	◆			◆	◆		◆	◆	◆	◆	◆	◆	
7. Fenn Pond (1) (at Lowell)*	G12	◆																				◆		◆	◆	◆	◆	
8. Five Mile Pond (2)	G14	◆																				◆			◆	◆		
9. Karolyns Pond (1)	H14	◆																				◆		◆				
10. Lewiston Levee Pond (2)*	A10	◆																				◆			◆			
11. Mann Lake (106)*	B10	◆												◆	◆	◆		◆	◆	◆		◆	◆	◆	◆	◆	◆	
12. Moose Creek Reservoir (27)*	D7	◆												◆	◆	◆			◆	◆		◆	◆	◆	◆	◆	◆	
13. Robinson Pond (2)*	E11	◆												◆								◆						
14. Soldiers Meadow Reservoir (118)	B11	◆												◆	◆		◆		◆			◆	◆	◆	◆	◆	◆	
15. Spring Valley Reservoir (53)*	B8	◆							◆					◆	◆	◆			◆			◆	◆	◆	◆	◆	◆	
16. Tolo Lake (40)	D13	◆												◆	◆	◆		◆				◆	◆	◆	◆	◆	◆	
17. Waha Lake (94)	B11	◆							◆				◆		◆		◆						◆	◆	◆	◆	◆	
18. White Sands Pond (3)	K10	◆																				◆			◆	◆		
19. Winchester Lake (100)*	C11	◆							◆					◆	◆	◆	◆	◆	◆			◆	◆	◆	◆	◆	◆	
<b>Rivers and Streams</b>																												
American River	G13	◆	◆		◆		◆	◆		◆		◆																
Clearwater River, Little North Fork	F7	◆	◆				◆		◆		◆														◆	◆		
Clearwater River, Mainstem	C10	◆	◆				◆	◆	◆		◆	◆	◆			◆		◆				◆	◆		◆	◆		
Clearwater River, Middle Fork	F12	◆	◆				◆	◆		◆		◆	◆									◆	◆		◆			
Clearwater River, North Fork	G8	◆	◆				◆	◆	◆		◆	◆	◆										◆		◆	◆	◆	◆
Clearwater River, South Fork	E13	◆	◆		◆		◆	◆		◆		◆												◆	◆			
Crooked Creek	G15	◆	◆				◆			◆		◆																
Crooked River	G14	◆	◆		◆		◆	◆		◆		◆													◆	◆		
Elk Creek	E8	◆			◆																					◆		
Kelly Creek	I8	◆	◆				◆					◆														◆		
Lochsa River and Tributaries	I10	◆	◆				◆	◆		◆		◆													◆	◆		
Orofino Creek	E10	◆								◆																		
Palouse River	B7	◆			◆																				◆	◆		
Potlatch River	C9	◆			◆					◆		◆														◆	◆	
Potlatch River, East Fork	D8	◆			◆					◆																		
Quartz Creek	F9	◆			◆																				◆	◆		
Red River	H14	◆	◆		◆		◆	◆		◆		◆													◆	◆		
Selway River and Tributaries	H12	◆	◆				◆	◆		◆		◆													◆	◆		
Salmon River	B13	◆	◆		◆		◆	◆		◆	◆	◆	◆					◆					◆	◆	◆	◆	◆	◆
Snake River - Hells Canyon Dam	A11	◆	◆				◆	◆		◆	◆	◆	◆		◆	◆		◆					◆	◆	◆	◆	◆	◆

\* Family Fishing Waters